

Exhibition Proposal: “After-Image”

Introduction:

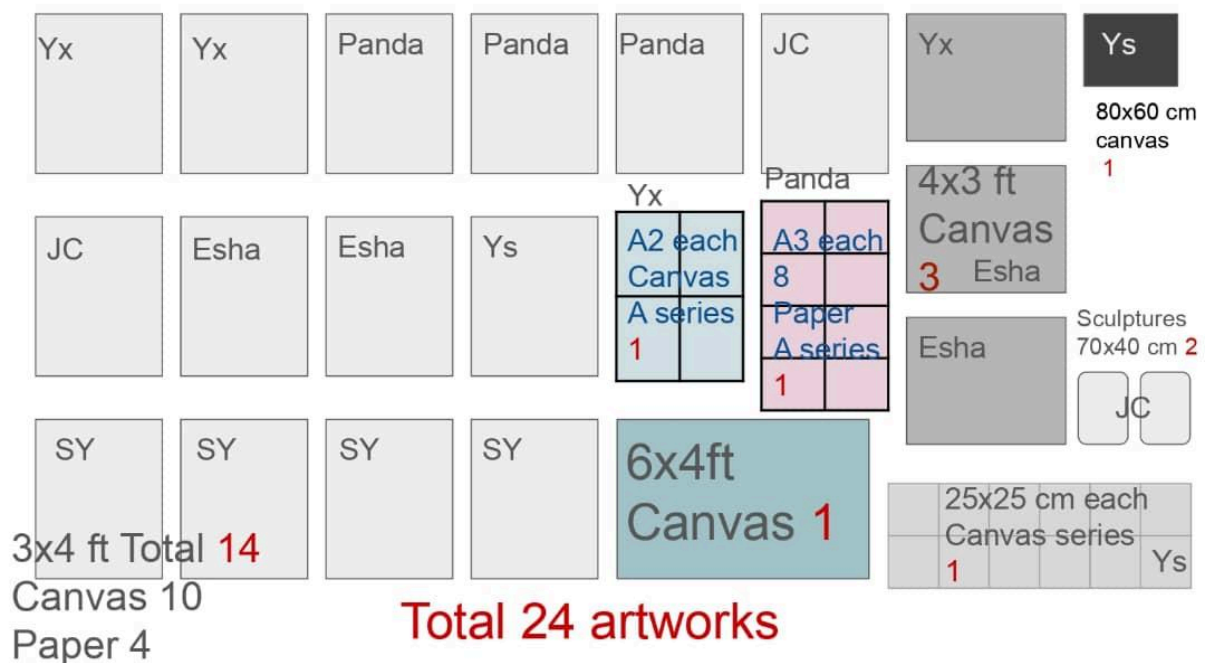
“After-image” refers to the visual trace that remains even after the original image is gone. It symbolizes the lasting impact of our years of learning, creating, and growing as artists.

This exhibition not only presents our final works, but also includes early drafts and process materials, revealing the layers behind each idea. Like an afterimage, these traces reflect our journey, transitions, and the marks left by time. Though the exhibition is temporary, we hope the experiences, emotions, and connections will linger in the viewers' minds, carrying the memory of this moment into the future.

Exhibition Period and Venue:

We are proposing to hold our exhibition, “After Image”, tentatively in October 2025. Our group consists of 6 participating students, and we plan to exhibit around **24 artworks**, including two sculptures. The exhibition is planned to run for **two weeks**. As we are still in the early planning stage, details such as budget and schedule will be discussed further once a venue is confirmed.

Artwork plannings in detail:



Yx: **Tan Yi Xing** Panda: **Tan Mei Yi** JC: **Chun Jia Chin** Esha: **Esha Osman** SY: **Tan Si Yin** Ys: **Low Yeong Shi**

3x4ft: **90x120 cm** A2: **42x 59.4 cm** A3: **29.7x 42 cm** 6x4ft: **180x 120cm**

Required space and items:

- About 30-40 chairs for opening day only
- 5 long tables
- 1 Storeroom
- 4 Show room for artworks display (1 big space and 3 small spaces)
- Display Platform x2 (estimation: 80x60x60cm and 50x60x60cm)

Provided by ourselves:

- We bring extension wire by ourselves
- Tools (Drills)
- Poster
- Artwork captions
- Refreshment
- Brochure
- Bunting

In Conclusion:

We have decided, according to our total artworks, we are required to have at least 5 showrooms to display our artworks for the exhibition. And that being said, the list above suggests things that we require from GMBB, and the things that we will be bringing by ourselves.

Objective:

The Fine Art Diploma Show marks the culmination of our two-and-a-half-year academic journey and the beginning of a deeper engagement with the art world. "After-Image" brings together a diverse body of work that explores the complexities of the inner self. Through paintings, drawings, and sculptures, we give form to quiet battles, unspoken thoughts, and the shifting emotions that shape our everyday experiences.

Working across varied styles, media, and techniques, we not only reflect our artistic growth, but also strive to create a contemplative space, one that invites our audience to pause, reflect, and connect with the emotional narratives embedded in each piece.

Lists of Artists and Artworks:

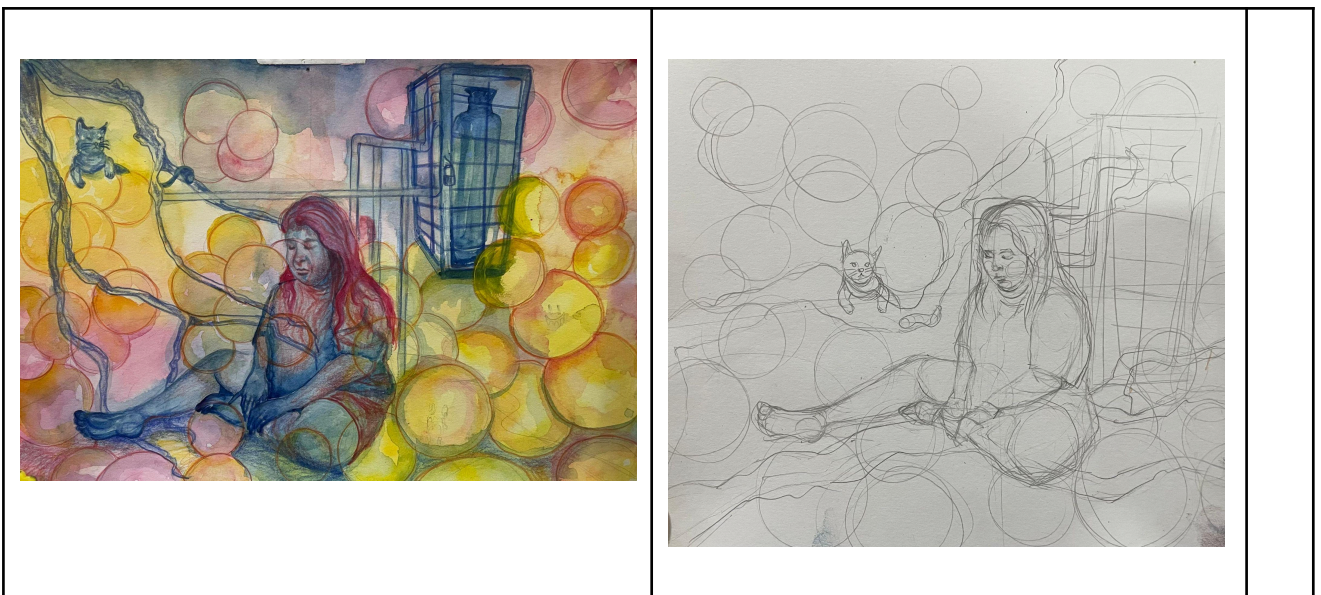
1. Esha Osman

As a young artist navigating the ever-evolving landscape of contemporary art, I often find myself reflecting on the roles I play—not just as a student, but as an advocate, a peer, and a listener. In my journey to uplift others and challenge societal norms, I've rarely paused to ask: How do I feel? What happens to the light-bearer who quietly burns while guiding others forward?

This body of work emerges from that very question. It is a raw and intimate exploration of my own emotional space—a visual diary of how the human body holds memory, trauma, joy, and survival. The body fascinates me, not only for its physicality but for its symbolic weight. It is the first home we inhabit, and often, the one we struggle with the most. My aim was to reflect the inner turbulence and quiet resilience that exist beneath the surface of our skin.

I chose soft pastel and acrylic as my primary mediums for their contrasting qualities. Each artwork will be done on a total of four canvases sized at 3x4 feet. This series does not offer resolutions. Instead, it invites viewers into a conversation: about care, exhaustion, memory, and how we relate to our own bodies. It is my attempt to reclaim space for my inner voice, to honor the complexity of being—and feeling—human.

SKETCHES



3x4ft

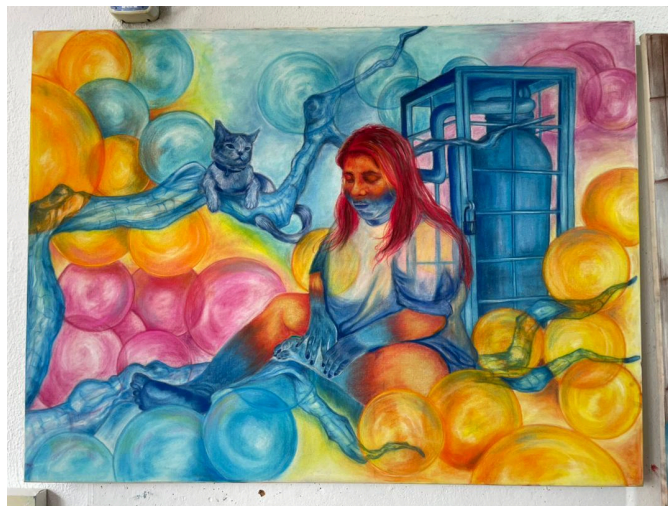
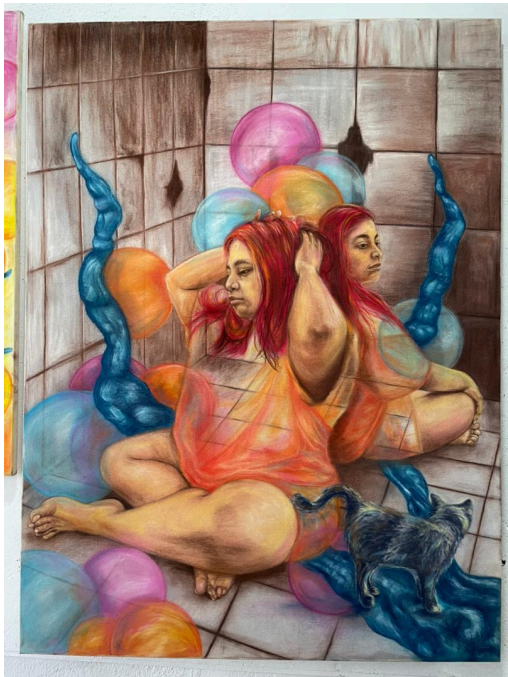


3x4ft



3x4ft

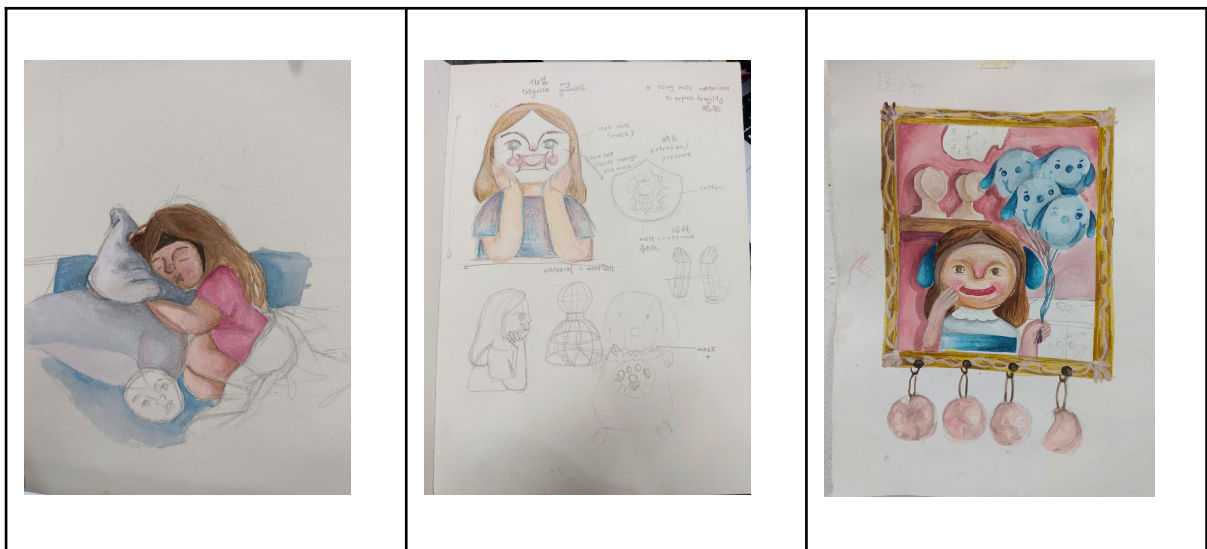
ARTWORK IN PROGRESS:



2. Chun Jia Chin

In psychology, there is a personality type known as the Highly Sensitive Person (HSP). They are emotionally delicate and highly empathetic, but also easily overwhelmed by the depth of their own feelings, often leading to emotional burnout. To others, they are often labeled as “too sensitive” or “too fragile.” But in truth, this is a quiet, genuine, and deeply felt inner trait. They tend to hide their emotions, finding it hard to express them, and even harder to be truly understood.

That’s why I chose a visual approach that appears cute on the outside, yet melancholic within, to carry this light yet heavy, quiet yet intense theme—emotional burnout. I use soft, childlike characters to express the loneliness and struggle deep within; and a “mask” to symbolize the emotional facade worn on the surface. Childhood represents emotional freedom, while adulthood often brings emotional suppression. For this series, I chose to work with needle-felted wool, a material that feels tender and fragile—just like the inner self I wanted to portray. The artworks may look soft, adorable, and gentle, but inside each character lies a silent emotional storm that has never been spoken aloud.

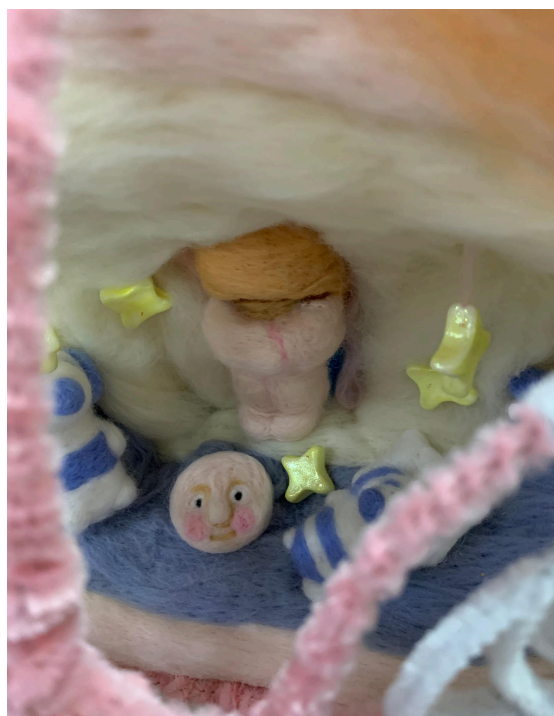


3x4ft

70cmx40cm

3x4ft

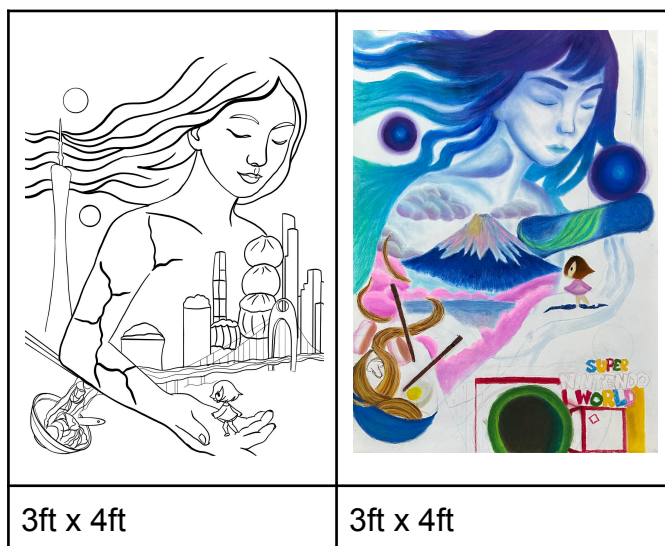
Artwork:



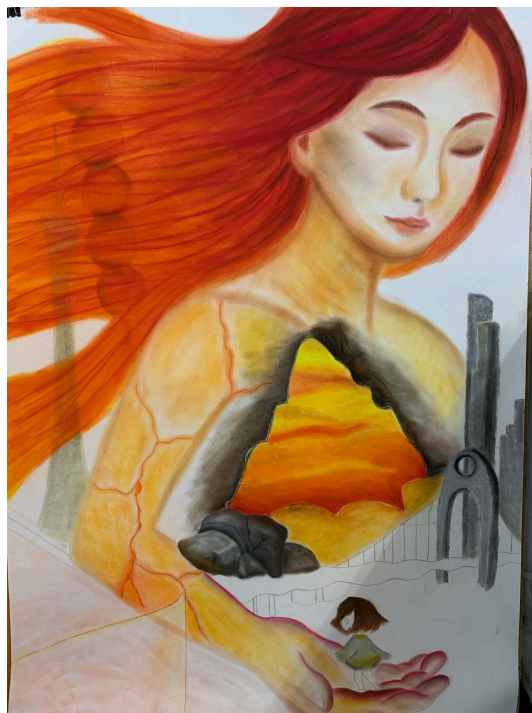
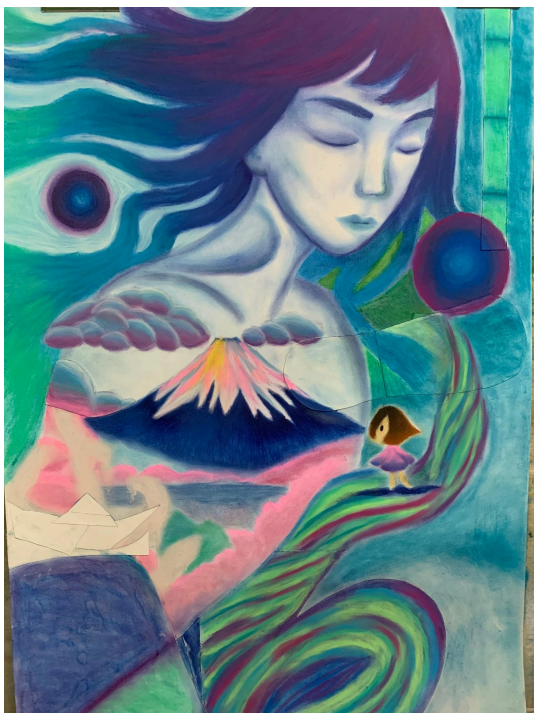
3. Tan Si Yin

This personal visual journey is a visual exploration of how places become emotional landscapes within the self. Drawing from both real travels and imagined destinations, each piece transforms cultural icons and personal memories into symbolic, dreamlike scenes. Japan, Guangzhou, Langkawi, and Bali are not depicted as literal locations, but as vessels of longing, joy, nostalgia, and inner transformation. Through layered imagery and intuitive composition, I use travel as a language to map my evolving identity—where every place is a feeling, and every feeling, a destination.

By blurring the line between memory and imagination, these works invite the viewer into a world where emotion shapes geography. Familiar symbols—like floating ramen or comforting dim sum—are reimagined as emotional markers rather than literal objects. Each composition unfolds intuitively, reflecting a personal journey of self-discovery. In mapping these inner landscapes, I am also tracing the shape of who I am becoming.



Artwork:

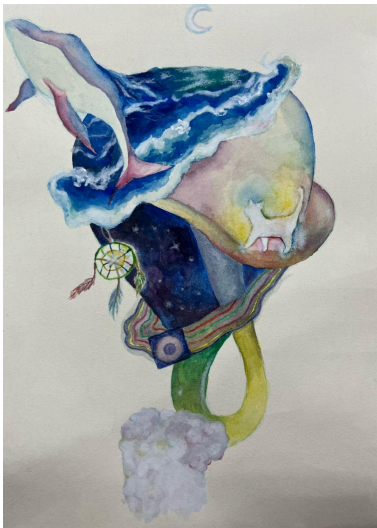


4. Tan Mei Yi

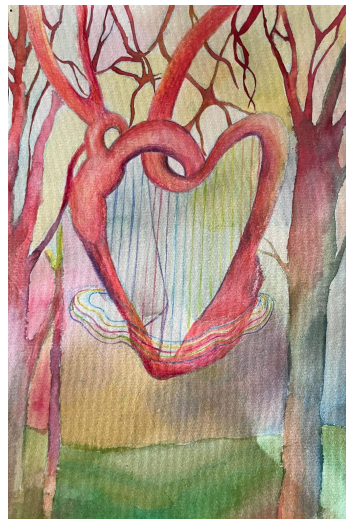
Throughout life, we experience countless moments and changes—some expected, many arriving without warning. These moments stir a wide range of emotions, from overwhelming joy to quiet fear. Among them, certain memories and chance encounters with remarkable people stay with us. They make us wish we could freeze time, hold onto a feeling, or keep a connection forever. But time, as always, moves forward.

This series of artworks is a personal reflection—an attempt to capture the changes I've gone through, the people I've met, and the experiences that have shaped me. Through imaginative, dreamlike scenes, I open a window into my inner world. Each piece reveals a part of who I am, offering viewers a glimpse beneath the surface—into the quiet thoughts and feelings that don't always get spoken aloud.

At the same time, these works are also about the beauty I'm still searching for. The ideals I haven't yet reached, the dreams I carry, and the images that live only in my mind—all of these take shape here in color and form. With every brushstroke, I try to create a world that balances memory and longing, reality and imagination. I hope that in these painted scenes, viewers might also find a sense of wonder, connection, and the quiet romance of things just out of reach—but still deeply felt.



3ft x 4ft



3ft x 4ft



3ft x 4ft

Artwork:



5. Low Yeong Shi

This series explores ambiguity and duality, drawing inspiration from tarot cards, metaphysical painting, and Op art. Using oil paint and acrylic, I construct surreal scenes of anonymous figures, broken structures, black-and-white contrasts, and symbolic elements such as chess pieces, reflecting a world where meaning is unstable and truth is layered or contradictory. These works also speak to relationships, society, absurdity, and power. By combining multiple interpretations with visual contradictions, the series invites viewers into a space where reality and illusion blur, encouraging dialogue between viewer and image, past and present, order and chaos.

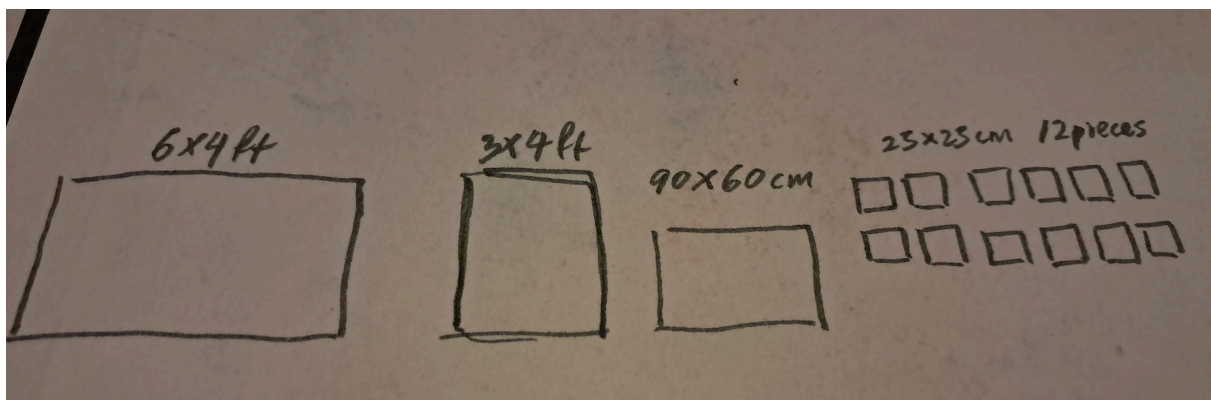
Sketches:

25x 25 cm each 12 pieces	25x25 cm each	3x4ft



6x4ft

Extra Sketches





Artworks in Progress:



3x4ft Oil paint



80x60 cm Acrylic



3x4ft Oil paint



25x25 cm each

6. Tan Yi Xing

This body of work explores how people are quietly shaped by invisible pressures - social expectations, filtered information, and emotional uncertainty. Through anthropomorphic animal figures and dreamlike compositions, the paintings depict characters torn between illusion and reality, belief and performance. Also influenced by symbolic narratives and surreal atmospheres, each painting explores how people unconsciously internalise control, often mistaking comfort for freedom, and repetition for truth.

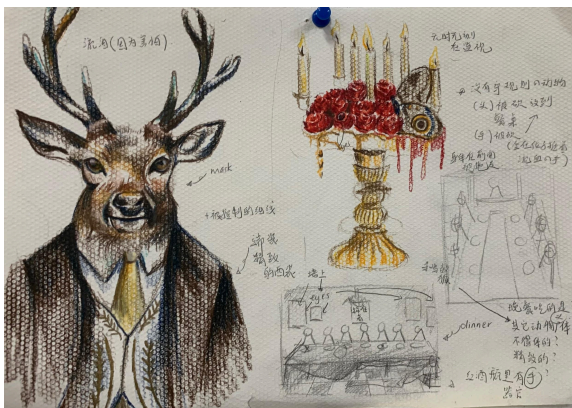
As an artist exploring ever-changing systems of meaning, this series reflects my interest in how identity is formed through personal denial and external conformity. I use oils on canvas to construct seemingly quiet but disturbing scenes.



3ft x 4ft



3ft x 4ft



3ft x 4ft

Artwork:



Audience Engagement:

To foster a meaningful and engaging experience, “After Image” will incorporate various audience engagement strategies. We will actively promote the exhibition across social media platforms such as Instagram, Facebook, and RedNote to reach a wider audience and generate interest. Additionally, we plan to set up interactive booths where visitors can purchase art-related merchandise or items inspired by the exhibited works, encouraging a deeper connection between the audience and the themes presented.

Conclusion:

“After-Image”, the Fine Art Diploma Show, is more than a culmination of our academic journey, it is a heartfelt reflection of our growth, challenges, and creative transformation. Each artwork serves as a trace of who we were and who we are becoming, exploring themes of inner emotion, human connection, and personal identity. This exhibition is both a farewell and a threshold, a moment where memories and impressions linger, even as we move forward. With this show, we share not just our art, but our voices, stories, and aspirations as we step with intention into the larger world of art and possibility.

Contact Information

Esha Osman

Email: artbyesha.eo@gmail.com

Instagram: [artdumpstation](#)

Contact number: 017 257 4930

Low Yeong Shi

Email: yeongshi.art@gmail.com

Instagram: [yeongshiii](#)

Contact number: 017 654 7362